



# MASSO Controller—Changing the Unit of Measurement on the Control Screen

## How to Change the General Settings to Inch or Metric on the MASSO Controller

In order to change your control screen to Inch or Metric, follow the instructions below.

1. Click on the F1 - SETUP soft key.
2. Enter your password.
3. Under “Function Settings,” double click on “General Settings.”



FIGURE 1

4. The top two options to choose from are “Machine units in millimeters” or “Machine units in inches.” Choose the unit of measure that you want to use. Then click on the “Save” button (see Figure 2).

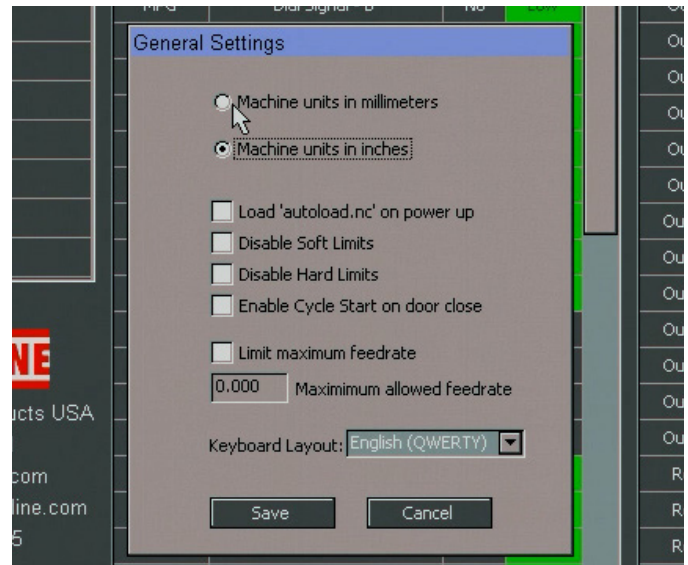


FIGURE 2

You can verify the change by clicking on the F2 - PROGRAM & MDI soft key at the bottom of the screen. Check the “MACHINE” window as seen in Figure 3.

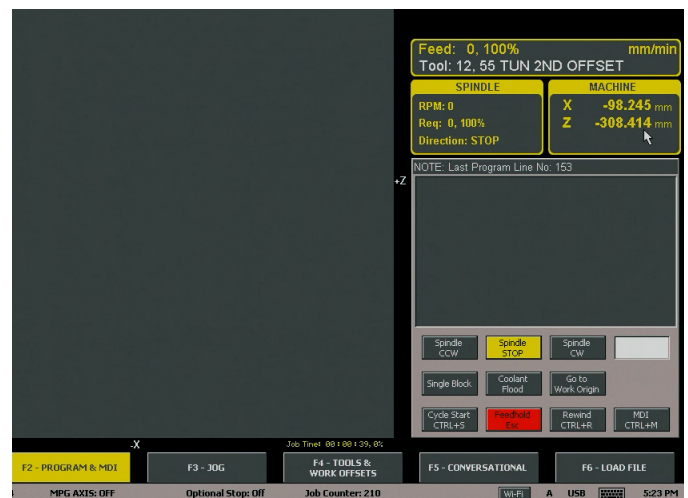


FIGURE 3—In this instance, the units of measurement were changed from inch to millimeters.

Thank you,  
Sherline Products